

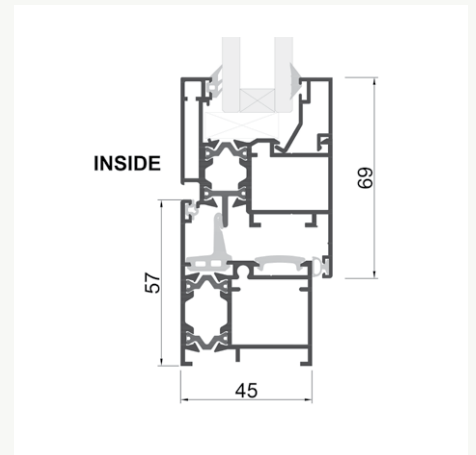
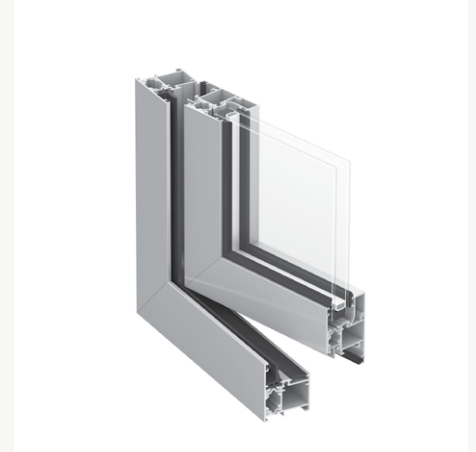
# EC45TB

EC45TB is Thermeco's most adaptive thermally broken system to suit Australia's broad and dynamic environmental conditions.






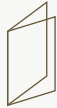
Thermally broken systems have been designed for improved energy efficiency. Our commitment to environmentally sustainable solutions delivers you greater comfort living and increased savings in your heating and cooling costs.

## Energy Rating WERS

GLAZING	Casement		Fixed	
	U	SHGC	U	SHGC
6mm Clear Toughened / 12mm Argon / 6mm Clear Toughened	3.2	0.43	2.8	0.59
6mm Energy Tech / 12mm Argon / 6mm Clear Toughened	2.7	0.38	2.1	0.51
6mm Performa Tech / 12mm Argon / 6mm Clear Toughened	2.5	0.20	1.9	0.26
6mm Sunergy Clear / 12mm Argon / 6mm Clear Toughened	2.8	0.31	2.3	0.43
6.38mm Clear ComfortPlus / 12mm Argon / 6mm Clear Toughened	2.7	0.37	2.1	0.50
6mm LightBridge / 12mm Argon / 6mm Toughened	2.8	0.35	2.0	0.48



## Opening Styles

						
	FIXED	CASEMENT	AWNING	TILT & TURN	TILT IN	HINGED DOORS
Max Width	various	1000	1000	1000	1120	1000
Max Height	various	2300	2000	2300	2300	3000
Max Weight	various	100kg	60kg	80kg	60kg	100kg

Windows for meaningful living.

15 Kelletts Road  
Rowville VIC Australia 3178  
P +61 3 9763 1089  
windows@thermeco.com.au  
thermeco.com.au

