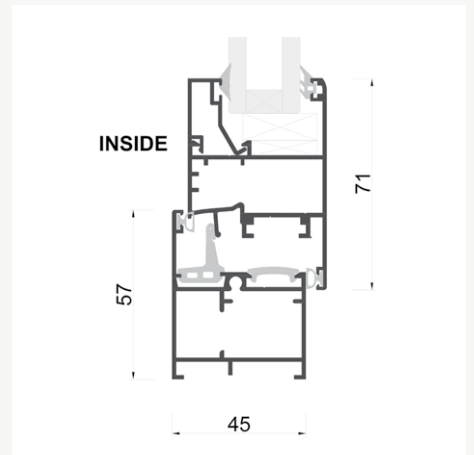
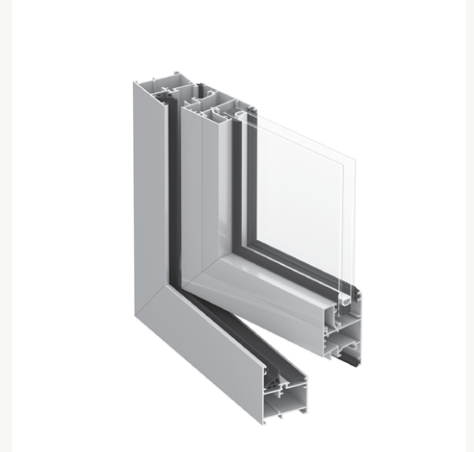


EC45







EC45 is Thermeco's most adaptive system to suit Australia's broad and dynamic environmental conditions.

Energy Rating WERS

GLAZING	Casement		Fixed	
	U	SHGC	U	SHGC
6mm Clear Toughened / 12mm Argon / 6mm Clear Toughened	4.3	0.44	3.2	0.60
6mm Energy Tech / 12mm Argon / 6mm Clear Toughened	3.9	0.38	2.5	0.52
6mm Performa Tech / 12mm Argon / 6mm Clear Toughened Grey	3.7	0.21	2.3	0.27
6mm Sunergy Clear / 12mm Argon / 6mm Clear Toughened	4.0	0.32	2.7	0.43
6.38mm Clear ComfortPlus / 12mm Argon / 6mm Clear Toughened	3.9	0.38	2.5	0.51
6mm LightBridge / 12mm Argon / 6mm Clear Toughened	3.8	0.36	2.4	0.48



Opening Styles

	 FIXED	 CASEMENT	 AWNING	 TILT & TURN	 TILT IN	 HINGED DOORS
Max Width	various	1000	1000	1000	1200	1000
Max Height	various	2300	2000	2300	2300	3000
Max Weight	various	100kg	60kg	80kg	60kg	100kg

Windows for meaningful living.

15 Kelletts Road
Rowville VIC Australia 3178
P +61 3 9763 1089
windows@thermeco.com.au
thermeco.com.au

