

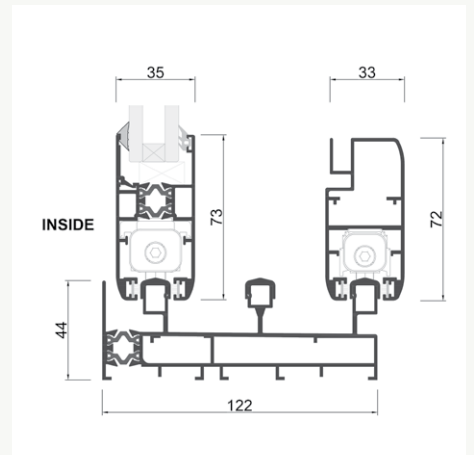
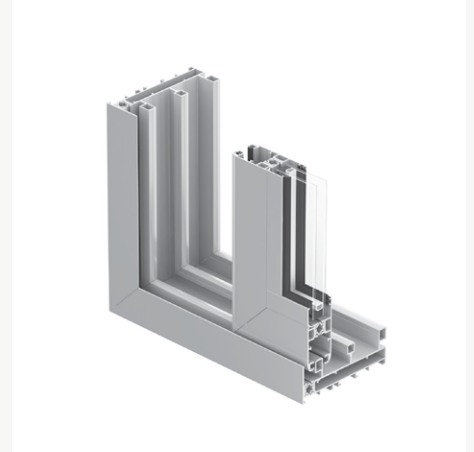
EC95TB

EC95TB designed with flexibility in mind this solution allows greater connection between inside living space and outside nature. It creates generous openings and allows maximum transparency and light penetration.

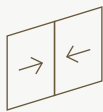
Thermally broken systems have been designed for improved energy efficiency. Our commitment to environmentally sustainable window solutions delivers you greater comfort of living and increased savings in your heating and cooling costs.

Energy Rating WERS

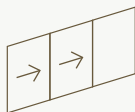
GLAZING	U	SHGC
6mm Clear Toughened / 10mm Argon / 6mm Clear Toughened	3.6	0.55
6mm Energy Tech / 10mm Argon / 6mm Clear Toughened	3.0	0.47
6mm Performa Tech / 12mm Argon / 4mm Clear Toughened	2.7	0.25
6mm Evantage / 12mm Argon / 6mm Clear Toughened	3.1	0.43
6mm Sunergy Clear / 10mm Argon / 6mm Clear Toughened	3.2	0.39
6.38mm Clear Comfort Plus / 10mm Argon / 6mm Clear Toughened	2.9	0.46
6mm LightBridge / 10mm Argon / 6mm Clear Toughened	2.8	0.45



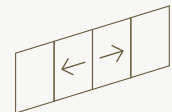
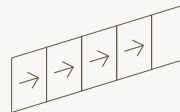
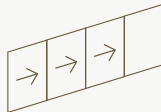
Opening Styles



SLIDING DOOR



STACKING DOOR



BI-PARTING DOOR

Max Panel Width	2000
Max Panel Height	3000
Max Panel Weight	150kg
Track Options	2 / 3 / 4 / 5

Windows for meaningful living.

15 Kelletts Road
 Rowville VIC Australia 3178
 P +61 3 9763 1089
 windows@thermeco.com.au
 thermeco.com.au

